

PARTS LIST

LONG REACH TRIMMER

LRT2300

NOTE :

1. Use KOMATSU ZENOAH genuine parts as specified in the parts list for repair and/or replacement.
2. KOMATSU ZENOAH does not warrant the machines, which have been damaged by the use of any parts other than those specified by the company.
3. When placing parts orders for repair and/or replacement, check if the model name and the serial number are applicable to those specified in the parts list, then use parts number described in the parts list.
4. The contents described in the parts list are accurate as of the date and may change due to improvement.
5. The parts for the machine shall be supplied ten (10) years after the machine is discontinued. [It is possible that some specific parts may be subject to change of their delivery term and list price within the limit of ten (10) years after the machine is discontinued. It is also possible that some parts may be available even after the limit of ten (10) years.]

APPLICABLE SERIAL NUMBERS:

1523 and up

December 1999

Fig.1 TRIMMER GROUP

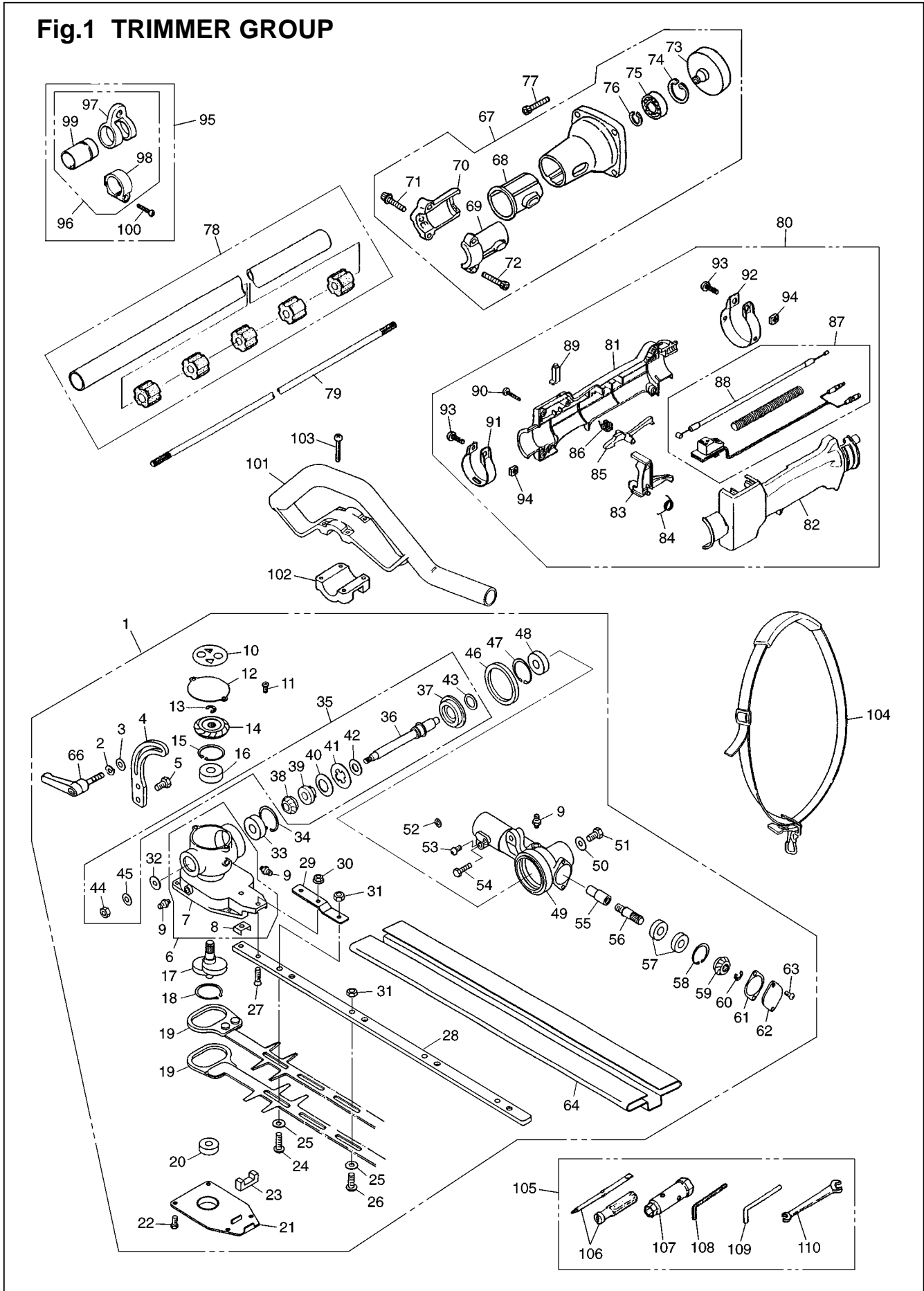


Fig.1 TRIMMER GROUP

Key#	DESCRIPTION	PART NUMBER	Q'TY /UNIT	NOTE	Key#	DESCRIPTION	PART NUMBER	Q'TY /UNIT	NOTE
1	LRT-A ASS'Y	6734-13002	1		57	• BEARING 6900RS	6782-13830	2	
2	• WASHER M6	0290-20615	1		58	• SNAP RING	04065-02212	1	
3	• WASHER 6x16x2.0	6598-13130	1		59	• BEVEL GEAR	6782-13850	1	
4	• ANGLE ADJUSTER	6782-13140	1		60	• RING	6598-13330	1	
5	• BOLT M6x12	0225-10612	2		61	• PACKING	6598-13860	1	
6	• CASING A SET	6782-13200	1		62	• COVER	6598-13870	1	
7	•• CASING A	_____	1		63	• SCREW M4x8	0263-10408	2	
8	•• PLATE	6782-13220	1		64	• BLADE COVER	6782-13910	1	
9	• GREASE FITTING	3199-13350	3						
10	• LABEL	6782-13250	1		66	• LEVER, clamp	6598-13110	1	
11	• SCREW M4x8	0263-10408	2		67	HOUSING ASS'Y	T3051-11000	1	
12	• COVER	6598-13320	1		68	• CUSHION	6470-31230	1	
13	• RING	6598-13330	1		69	• BRACKET (A)	6470-31211	1	
14	• BEBEL GEAR	6782-13340	1		70	• BRACKET (B)	6470-31221	1	
15	• SNAP RING	04065-02612	1		71	• BOLT	01252-30514	1	
16	• BEARING	06004-06000	1		72	• BOLT	01252-30530	2	
17	• CRANK SHAFT	6782-13370	1		73	• DRUM, clutch	6460-12111	1	
18	• SNAP RING	04064-02815	1		74	• BEARING	06004-06001	1	
19	• BLADE	6782-13411	2		75	• SNAP, ring	04064-01210	1	
20	• BEARING 608Z	6782-13430	1		76	• SNAP, ring	04065-02812	1	
21	• COVER	6782-13440	1		77	BOLT	6468-91150	4	
22	• BOLT M4x10	6782-13450	4		78	PIPE comp.	6038-11301	1	
23	• FELT	6782-13460	1		79	SHAFT	3520-12212	1	
24	• SCREW	3884-11750	1		80	GRIP ASS'Y	6423-11330	1	
25	• WASHER	3880-11780	4		81	• BODY(R)	6464-12210	1	
26	• SCREW L17	6598-13510	3		82	• BODY(L)	6464-12220	1	
27	• SCREW M5x20	6598-13530	2		83	• LEVER	6464-12230	1	
28	• GUIDE PLATE	6782-13540	1		84	• SPRING	1638-84170	1	
29	• PLATE	6782-13550	1		85	• LEVER	6464-12240	1	
30	• NUT M5	6782-14470	2		86	• SPRING	1638-84180	1	
31	• NUT M6	3880-11790	4		87	• SWITCH COMP	6423-12230	1	
32	• WASHER 6x15x2.0	6782-13650	1		88	•• CABLE COMP	6423-11390	1	
33	• BEARING 608 2RS	6598-13430	1		89	• LOCK	1638-84150	1	
34	• SNAP RING	04065-02212	1		90	• SCREW	1638-84220	4	
35	• SHAFT KIT	T4008-06010	1		91	• BAND	6464-12250	1	
36	•• SHAFT	_____	1		92	• BAND	1638-84160	1	
37	•• GEAR(B)	_____	1		93	• SCREW	0263-60620	2	
38	•• GEAR(C)	T4008-13630	1		94	• NUT	1638-84190	2	
39	•• BOSS	_____	1		95	HANGER-ASS'Y	6420-17300	1	
40	•• SPRING	T4008-13650	1		96	• HANGER COMP	6420-17400	1	
41	•• PLATE	T4008-13660	1		97	•• HANGER	9366-17110	1	
42	•• WASHER	T4008-13670	1		98	•• CLAMP	9366-17120	1	
43	•• WASHER	T4008-13680	1		99	•• SLEEVE	6420-17410	1	
44	•• NUT M6	0280-10605	1		100	• SCREW	0263-90525	1	
45	•• WASHER	0290-20615	1		101	HANDLE	6489-14300	1	
46	• O-RING P41	6598-13620	1		102	CLAMP	6420-14320	1	
47	• SNAP RING	04065-02612	1		103	SCREW M5x35	0263-90535	4	
48	• BEARING	06004-06000	1		104	STRAP ASS'Y	6489-17200	1	
49	• CASING B	6780-13710	1		105	TOOL KIT	3550-91000	1	
50	• WASHER 6x16x2.0	6598-13130	1		106	• SCREWDRIVER	1030-91340	1	
51	• BOLT M6x12	0225-10612	1		107	• SOCKET	3239-91310	1	
52	• WASHER 5x10x1.0	6782-13720	1		108	• WRENCH	09007-00425	1	
53	• BOLT M5x10	01252-30510	1		109	• BAR	3540-91110	1	
54	• BOLT M5x30	3350-21320	1		110	• SPANNER	3540-91120	1	
55	• JOINT	6782-13810	1						
56	• GEAR SHAFT B	6598-13820	1						

Fig.2 ENGINE GROUP

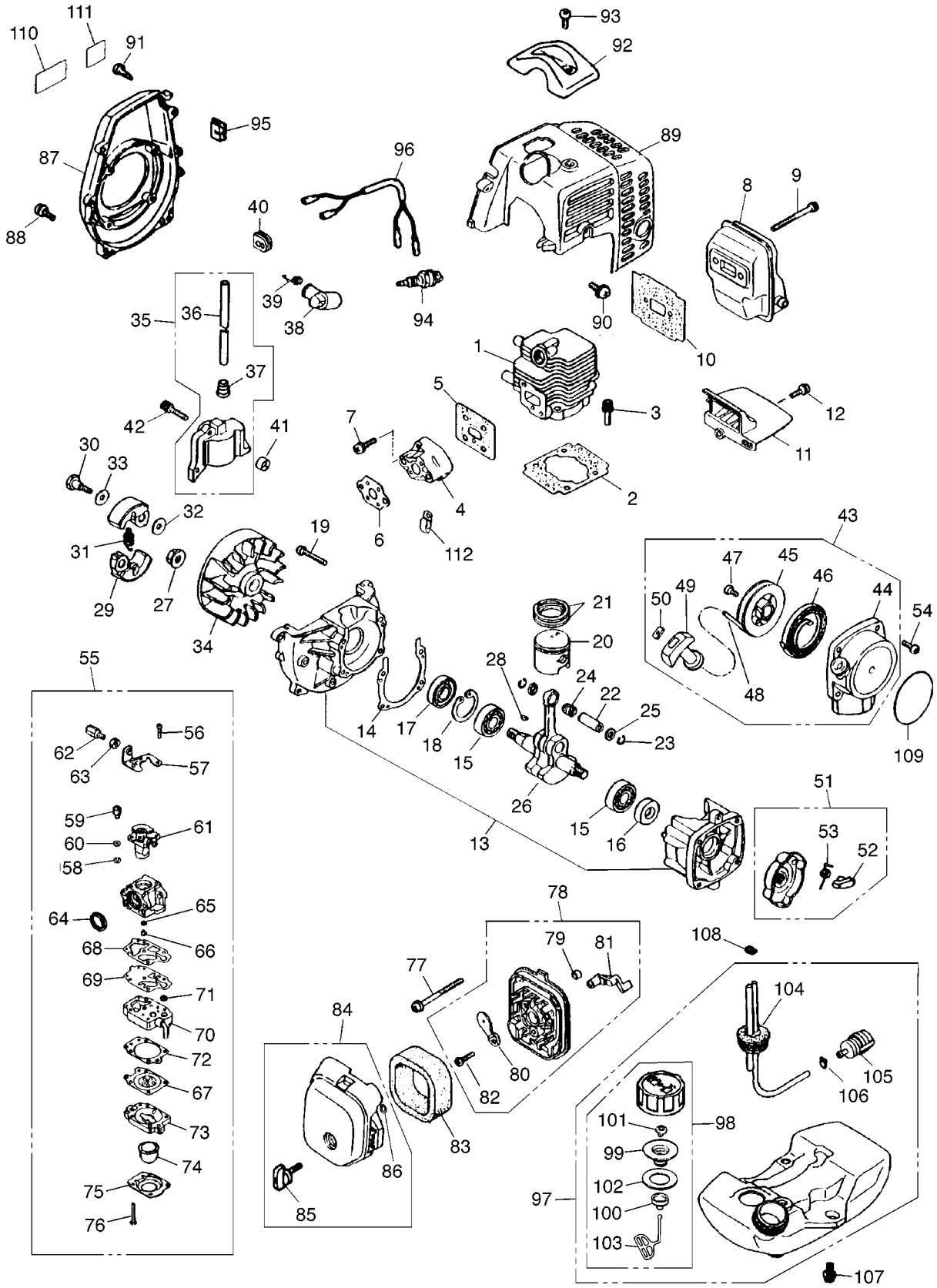


Fig.2 ENGINE GROUP

Key#	DESCRIPTION	PART NUMBER	Q'TY /UNIT	NOTE	Key#	DESCRIPTION	PART NUMBER	Q'TY /UNIT	NOTE
1	CYLINDER	5500-12110	1		57	• BRACKET	5500-81120	1	
2	GASKET, base	5500-12212	1		58	• RING	1751-81130	1	
3	BOLT	1850-12130	2		59	• SWIVEL	1881-81140	1	
4	INSULATOR	5500-13162	1		60	• WASHER	5500-81160	1	
5	GASKET, insulator	5500-13121	1		61	• VALVE ASS'Y	5500-81153	1	
6	GASKET, carburetor	5500-13131	1		62	• SCREW, adjuster	1918-81170	1	
7	SCREW	0263-90520	2		63	• NUT, adjuster	1751-81180	1	
8	MUFFLER	5580-15110	1		64	• RING	1881-81130	1	
9	BOLT	01252-30550	2		65	• O-RING	1751-81240	1	
10	GASKET, muffler	5910-15211	1		66	• JET	5500-81251	1	
11	PLATE, muffler	5500-15220	1		67	• DIAPHRAGM	3310-81260	1	
12	SCREW	0263-90416	1		68	• GASKET, pump	1065-81410	1	
13	CRANKCASE COMP.	5500-21100	1		69	• DIAPHRAGM, pump	1065-81420	1	
14	GASKET, case	5500-21141	1		70	• BODY, pump	1850-81450	1	
15	BEARING	06030-06001	2		71	• SCREEN	3306-81380	1	
16	OIL SEAL	2169-21210	1		72	• GASKET, diaphragm	1850-81470	1	
17	OIL SEAL	1850-21220	1		73	• BODY, purge	1850-81490	1	
18	SNAP RING	04065-02812	1		74	• PUMP, priming	1751-81510	1	
19	SCREW	01252-30530	4		75	• COVER, pump	1850-81520	1	
20	PISTON	5600-41111	1		76	• SCREW	1850-81530	4	
21	RING	1100-41210	2		77	SCREW	0263-90560	2	
22	PIN	1101-41310	1		78	BODY ASS'Y	5500-82102	1	
23	SNAP RING	1260-41320	2		79	• SLEEVE	1970-82190	2	
24	BEARING	5500-41410	1		80	• PLATE, choke	5500-82131	1	
25	WASHER	1101-41340	2		81	• LEVER, choke	5500-82140	1	
26	CRANKSHAFT COMP.	5500-42001	1		82	• SCREW	2630-33610	1	
27	NUT	1650-43230	1		83	ELEMENT	5500-82171	1	
28	KEY	1000-43240	1		84	COVER ASS'Y	5600-82202	1	
29	SHOE, clutch	1140-51111	2		85	• KNOB	5500-82221	1	
30	SCREW	1140-51250	2		86	• RING	5500-82230	1	
31	SPRING	1970-51221	1		87	COVER, fan	5501-31111	1	
32	WASHER	1140-51230	2		88	SCREW	0263-90520	4	
33	WASHER	1970-51241	2		89	COVER, engine	5580-32112	1	
34	ROTOR	5501-71110	1		90	SCREW	1850-32160	1	
35	COIL ASS'Y	5501-71201	1		91	SCREW	1900-31410	2	
36	• CORD	5500-71220	1		92	GUARD, plug	5500-32210	1	
37	• CAP	2616-71320	1		93	SCREW	0263-90514	1	
38	CAP, plug	1900-72112	1		94	SPARK PLUG	5535-73110	1	
39	SPRING	1900-72120	1		95	GROMMET	1852-72121	1	
40	GROMMET	5500-72130	1		96	CORD COMP.	5500-73201	1	
41	SPACER	1260-71261	2		97	TANK ASS'Y	5504-85003	1	
42	BOLT	3310-72150	2		98	• CAP ASS'Y	5607-85200	1	
43	RECOIL ASS'Y	5500-75100	1		99	•• HOLDER	5601-85230	1	
44	• CASE COMP.	5500-75110	1		100	•• CAP	5600-85240	1	
45	• REEL	1850-75120	1		101	•• VALVE	5600-85250	1	
46	• SPRING, spiral	1850-75130	1		102	•• PACKING	5500-85220	1	
47	• SCREW	1850-75151	1		103	•• STOPPER	3317-57242	1	
48	• ROPE	1850-75160	1		104	• PIPE COMP.	5500-85300	1	
49	• KNOB	1140-75320	1		105	• FILTER ASS'Y	5500-85400	1	
50	• PLATE, stopper	5500-75170	1		106	• CLIP	1260-85460	1	
51	PULLEY ASS'Y	1850-75201	1		107	SCREW	5500-85510	3	
52	• RATCHET	1850-75221	1		108	CLIP	1950-86120	1	
53	• SPRING	1850-75230	1		109	LABEL, recoil	5504-91120	1	
54	SCREW	0263-90416	4		110	LABEL, cover	5504-91130	1	
55	CARBURETOR ASS'Y	5500-81002	1		111	LABEL(CE)	2634-31420	1	
56	• SCREW	1752-81110	2		112	CLAMP	1140-72231	1	

[Gardening Tools](#)
[Direct - Leaders in](#)
[Garden Machinery](#)

Blower Vacs	Brushcutters	Brush cutters	Chainsaws
Chain saws	Cultivators	Cylinder Lawn Mowers	Cylinder Mowers
Echo Chainsaws	Echo Strimmers	Electric Chainsaws	Fertiliser Spreaders
Garden Blowers	Garden Rollers	Garden Shredders	Garden Tractors
Garden Vacuums	Hayter Lawn Mowers	Hedge Cutters	Hedgecutters
Hover Mowers	Husqvarna Chainsaws	Kawasaki Brush Cutters	Kawasaki Strimmers
Lawn Mowers	Lawn Scarifiers	Lawn Tractors	Leaf Blowers
Leaf Vacuums	Petrol Chainsaws	Petrol Hedge Cutters	Ride on Lawn Mowers
Ride on Mowers	Rotary Mowers	Rotavators	Ryobi Strimmers
Scarifiers	Strimmers	Westwood Lawn Tractors	Westwood Ride on Mowers
Westwood Tractors	Petrol Strimmers	Kawasaki Petrol Strimmers	Echo Petrol Strimmers
Petrol Lawn Mowers	Petrol Garden Mowers	Rotary Lawn Mowers	Hayter Garden Mowers
Husqvarna Petrol Chainsaws	Echo Chain Saws	Petrol Chain Saws	Kawasaki Hedge Cutters
Kawasaki Hedgecutters	Garden Hedge Cutters	Electric Hedge Cutters	Allen Hover Mowers
Echo Petrol Chainsaws	Electric Hedgecutters	Rally Ride On Mower	Rally Garden Tractors
Leaf Hoovers	Bosch Hedge Cutters	Bosch Hedge Trimmers	Hedge Trimmers
Petrol Hedge Trimmers	Garden Hedge Trimmers	Garden Roller	Lawn Roller
Rollers	Fertilizer Spreaders	Fertilizer Sprayers	Fertiliser Sprayers
Garden Sprayer	Garden Rotavators	Garden Cultivators	Electric Garden Shredders
Outdoor Shredders	Garden Shredders UK	Petrol Shredders	Lawn Mowers UK
Petrol Rotary Lawn Mowers	Petrol Cyliner Lawn Mowers	Atco Lawn Mowers	Sit on Lawn Mowers
Garden Strimmers	Garden Chainsaws	Backpack Sprayers	Knapsack Sprayers
Pesticide Sprayers	Midgeater Plus	Home Brush Cutters	Home Brushcutters
Snow Sledges	Trampolines	Go Karts	Gritters
Petrol Brush Cutters	Ryobi Brush Cutters	Petrol Garden Strimmers	Hayter Ranger 48 Autodrive
Lawn Sweepers	Leaf Collectors	Petrol Brush Cutters	Petrol Rotary Lawn Mowers

Garden Vacs	Gardena Hedge Cutters	Husqvarna Garden Tractors	Kawasaki Brushcutters
Backpack Blowers	Blower Vac Range	Discounted Brushcutters	Echo Petrol Chainsaws
Three Great Lawn Mowers	Discounted Lawn Mowers	Brush Cutter Selection	Atco Lawn Mowers
Kawasaki Brushcutters	Discounted Brushcutters	Grit Spreaders	Salt Spreaders
Husqvarna Rider Tractors	Sledges		